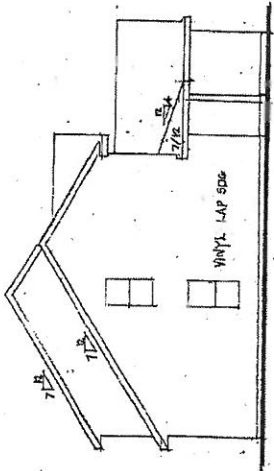


COPYRIGHT MAY, 2011

6355 Paragon Dr.
Omaha, NE 68152
Sherm Super President
Ph 402-816-6188

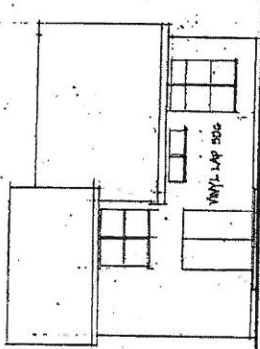
Design &
Construction Inc.

ENCORE



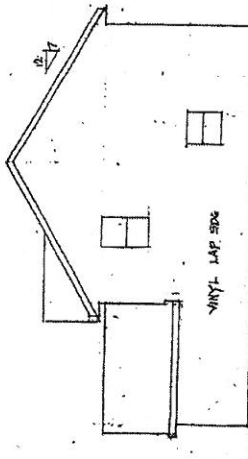
LEFT ELEVATION

1/8" = 1'-0"



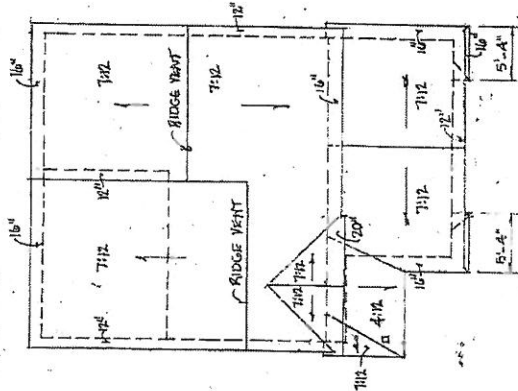
REAR ELEVATION

1/8" = 1'-0"



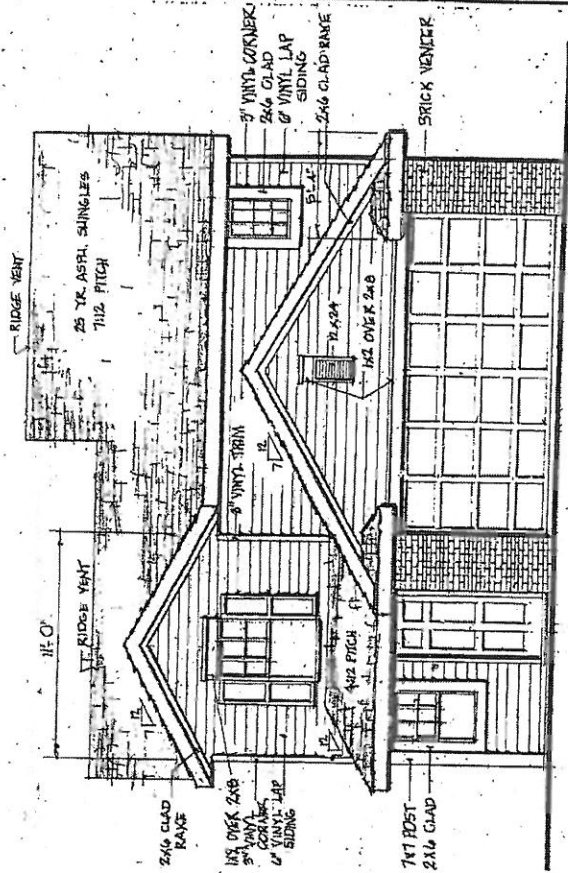
RIGHT ELEVATION

1/8" = 1'-0"



ROOF PLAN

1/8" = 1'-0"



FRONT ELEVATION

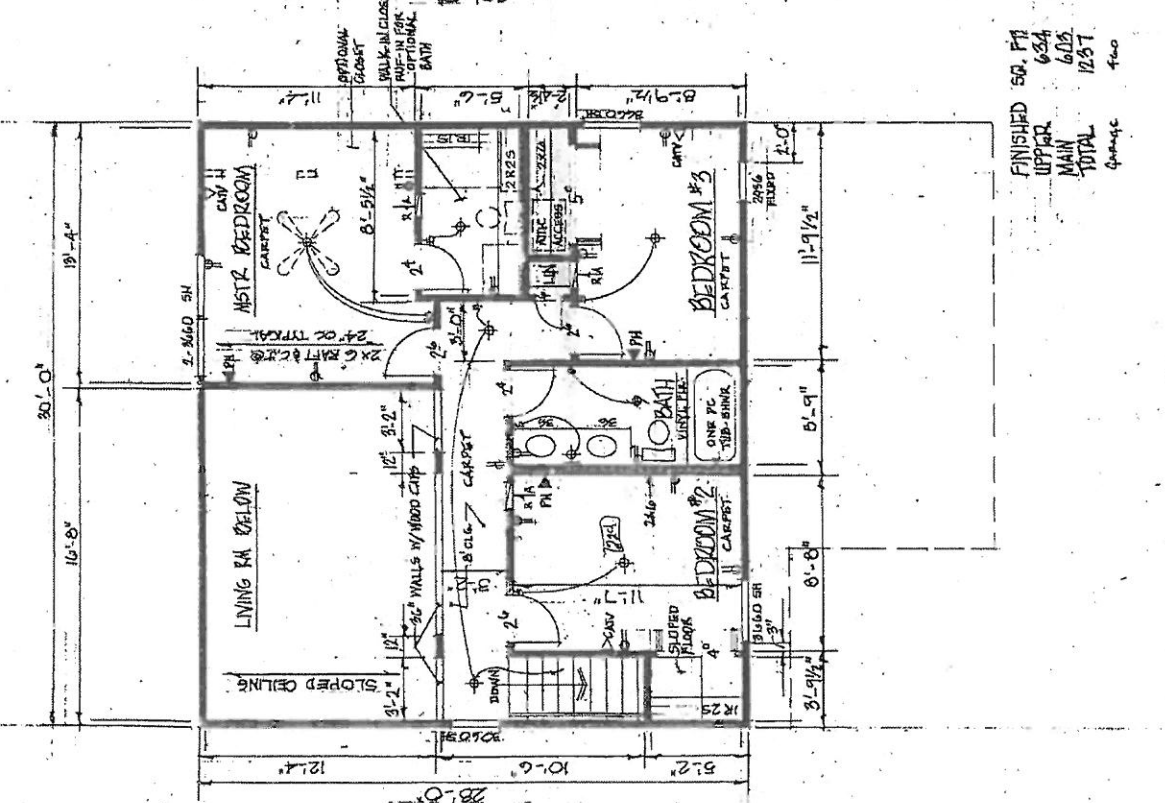
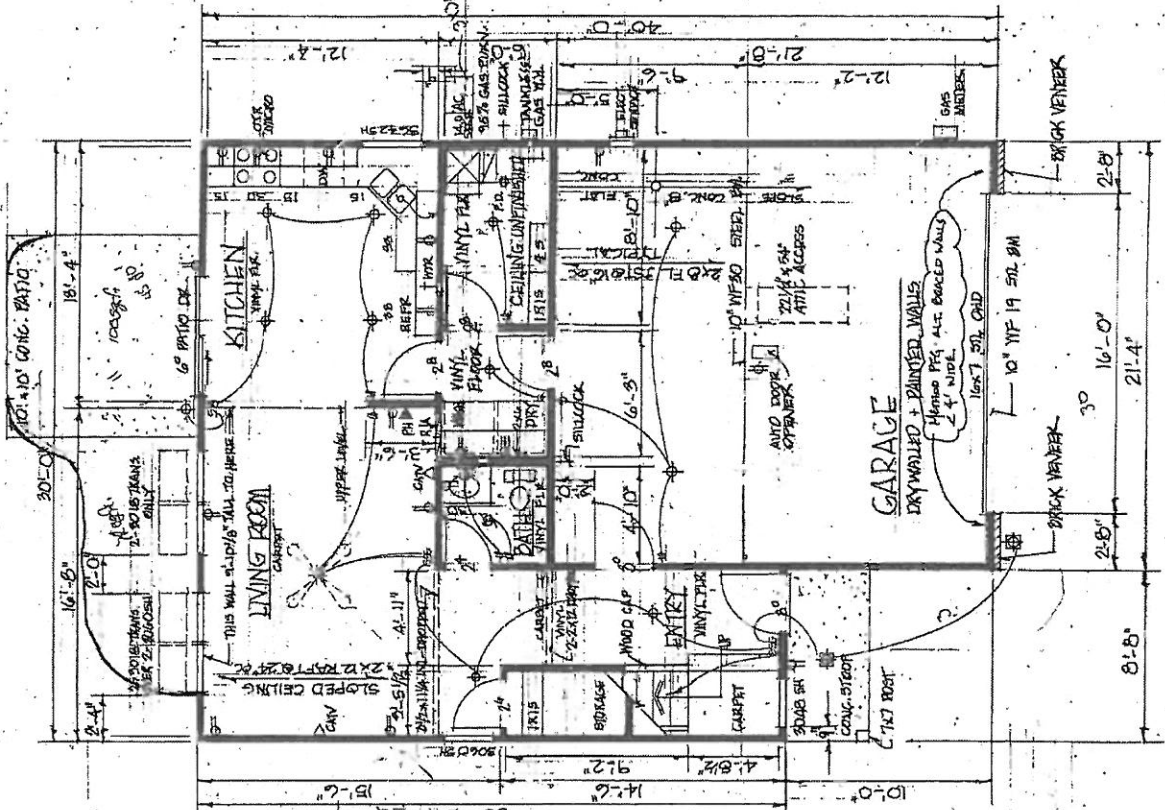
1/4" = 1'-0"

ENCORE

Design & Construction Inc.

5555 Partridge Dr.
Omaha, NE 68152
Shem & Per, President
PH 402-616-8188

COPYRIGHT MAY, 2011



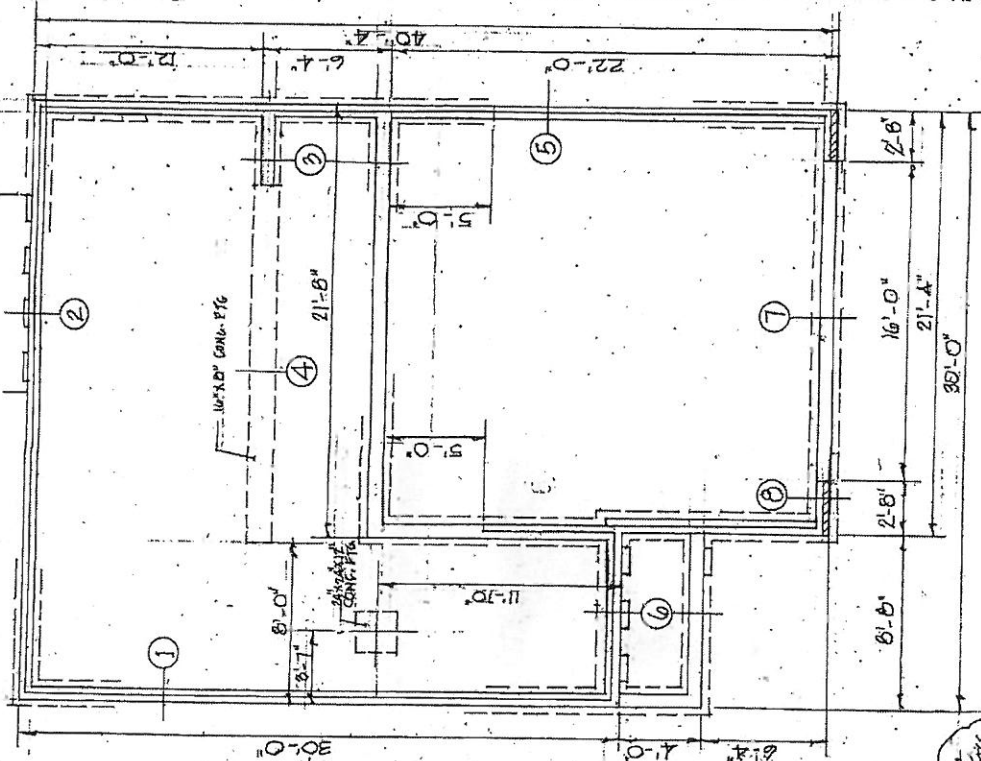
| | |
|------------------|------|
| FINISHED SQ. FT. | 50 |
| UPPER | 634 |
| MAIN | 605 |
| TOTAL | 1237 |
| 400 | |

ENCORE

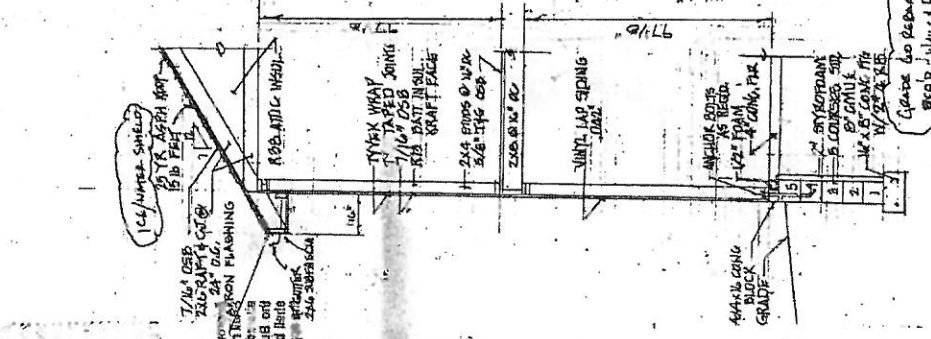
Design & Construction, Inc.
 5255 Paragon Dr.
 Omaha, NE 68152
 Sherm Soper, President
 Ph 402-818-5188

COPYRIGHT MAY 2011

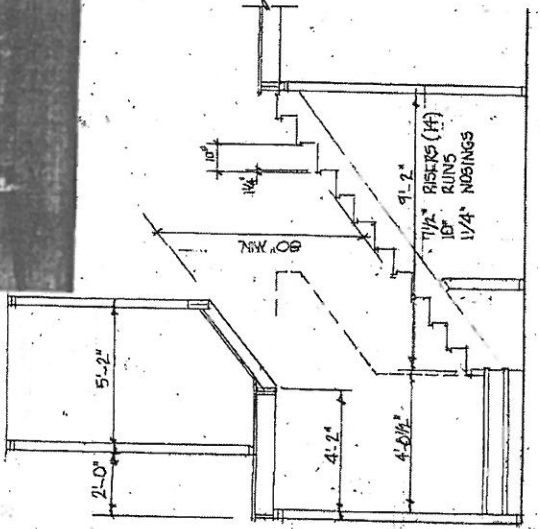
FOUNDATION PLAN 1/4"=1'-0"



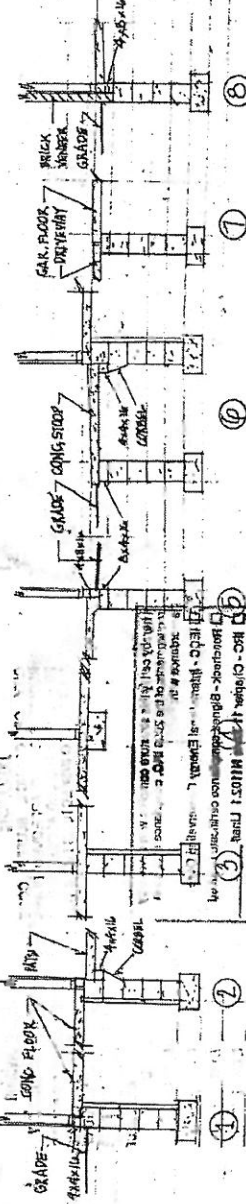
TYPICAL SECTION 3/8"=1'-0"



STAIR SECTION 3/8"=1'-0"



SECTIONS



1. RC - Concrete
 2. Brick
 3. Brick
 4. Brick
 5. Brick